

REAL ESTATE WEEKLY

May 13, 2015

Euro Properties taps Soo K. Chan for luxury midtown apartment tower

Euro Properties, an international real estate development firm, has unveiled its plan for 118 East 59th Street, a luxury condominium in Manhattan.

The services of internationally acclaimed architect Soo K. Chan of SCDA Architects have been retained for the building's architectural and interior design.

Euro Properties has also selected Brown Harris Stevens Development Marketing as the exclusive sales and marketing team.

"Our attention to detail, to crafting homes that inspire and enable a serene, contemporary luxurious lifestyle, will come to life at 118 East 59th Street, where the desirable location, thoughtful design and impeccable construction will set a new bar for Upper East Side living," said Que Yau Neo, Euro Properties Founder and CEO.

"Architect Soo K. Chan shares our passion for the creation of exquisite, bespoke homes, and our collaboration is going to result in just 29 private, custom residences that each occupy a full floor or more, and fulfill every dream

of a beautiful life in New York City."

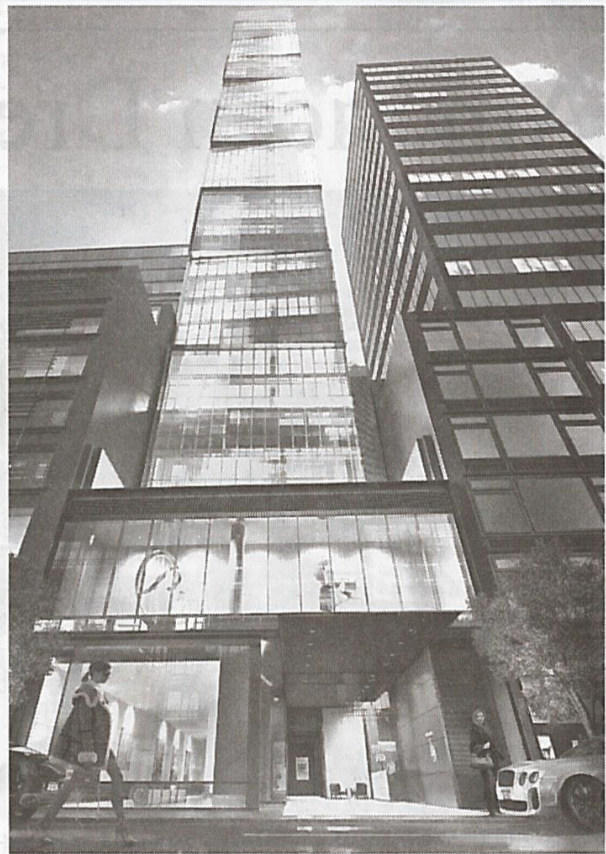
Located alongside some of the most prestigious addresses and adjacent to Billionaires Row, 118 East 59th Street is surrounded by Michelin-starred dining, world class shopping, and cultural landmarks.

The 38-story building is designed to offer views while its 29 full-floor residences will provide owners with a private sanctuary in the city.

"We are thrilled to bring this singular offering to the market," said Stephen Kliegerman of Brown Harris Stevens Development Marketing.

"These residences represent a remarkable opportunity to acquire one of only 29 spacious, gracious full-floor residences in the most highly desirable neighborhood in Manhattan. 118 East 59th Street is a stand-out in this market, and we are confident that buyers will respond to the extremely limited, bespoke quality, high value offering."

Soo K. Chan commented, "We designed the tower to have both north and south frontages, which brings large



Rendering of 118 East 59th Street

quantities of light into the residences and interplays well with the double height ceil-

ings. Each residence is distinguished by elements typically found in a penthouse."